



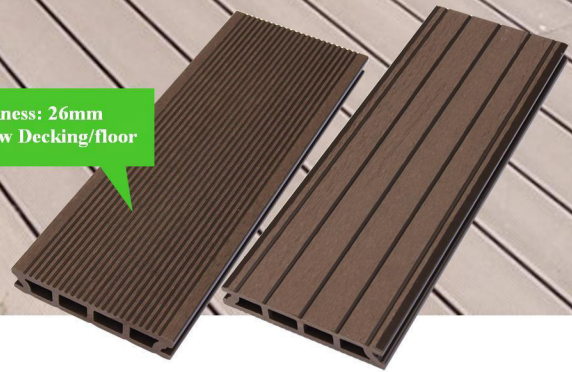
Thickness: 25mm  
Hollow Decking/floor



Thickness: 25mm  
Solid Decking/floor



Thickness: 26mm  
Hollow Decking/floor



GFP-011  
SS Buckle 01



GFP-012  
SS Buckle 02



GFP-013  
P buckle 01



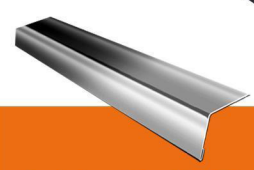
GFP-014  
SS Buckle 03



WPC ending/skirt



WPC 'L' ending/skirt



Aluminium 'L' ending/skirt



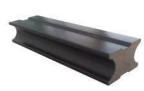
P plug

**Notice:**

The company has many different kinds of different deckings, it can be selected according to customers or projects requests for decking/floor or accessories



WPC Keel/Joist: K30-60



Y25-40



B32-57

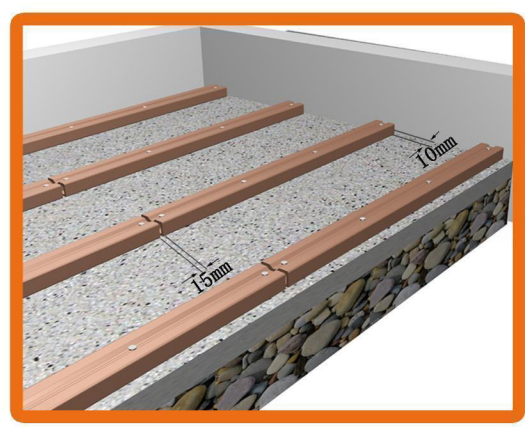
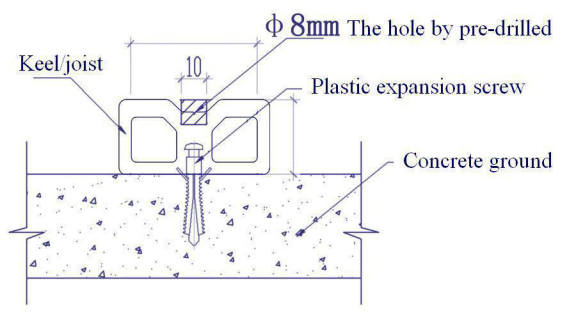
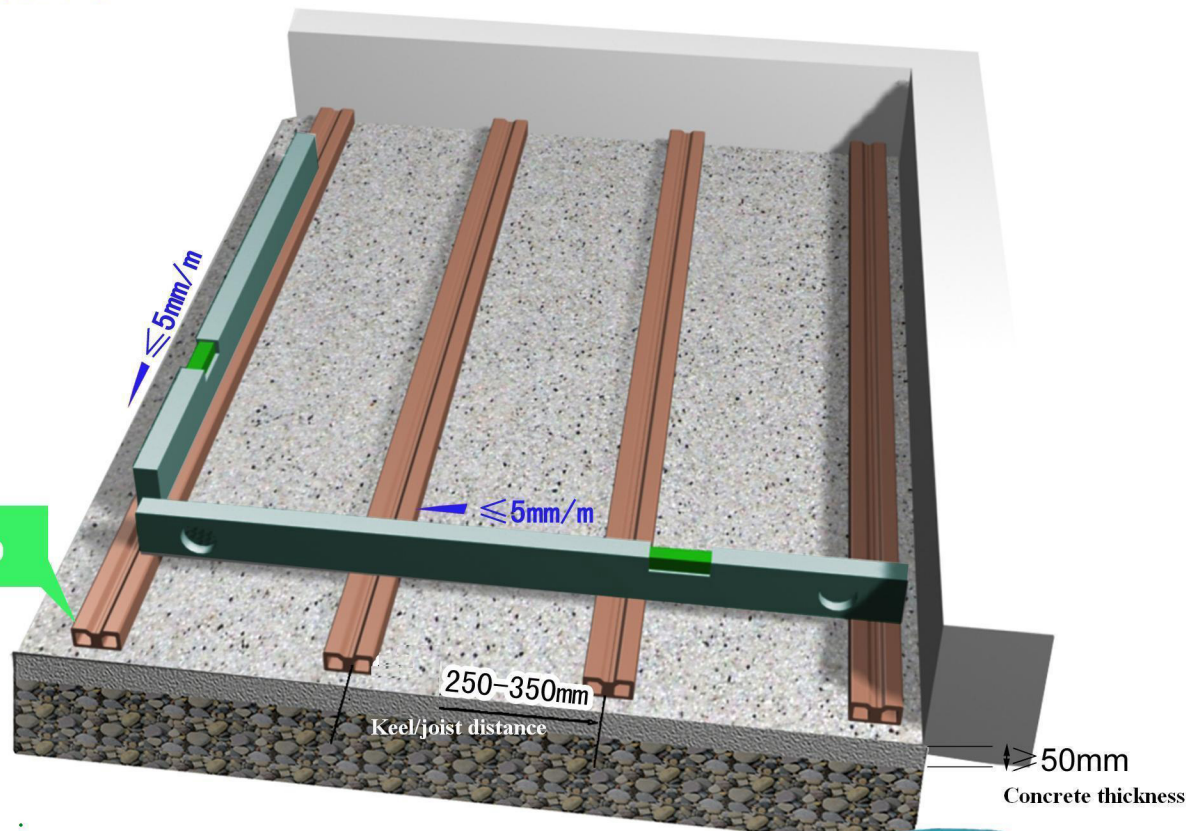


K30-51

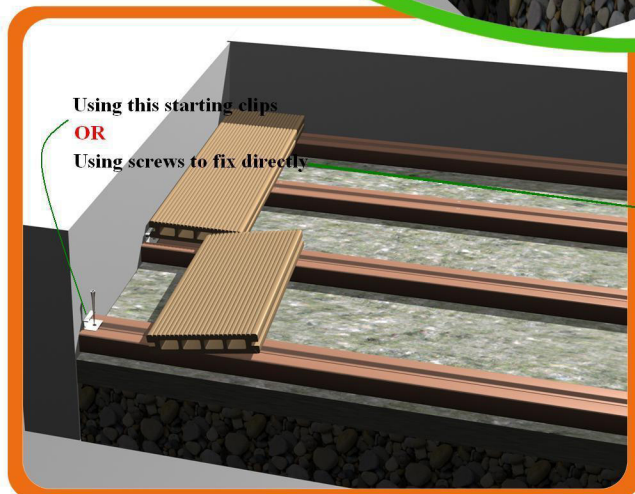
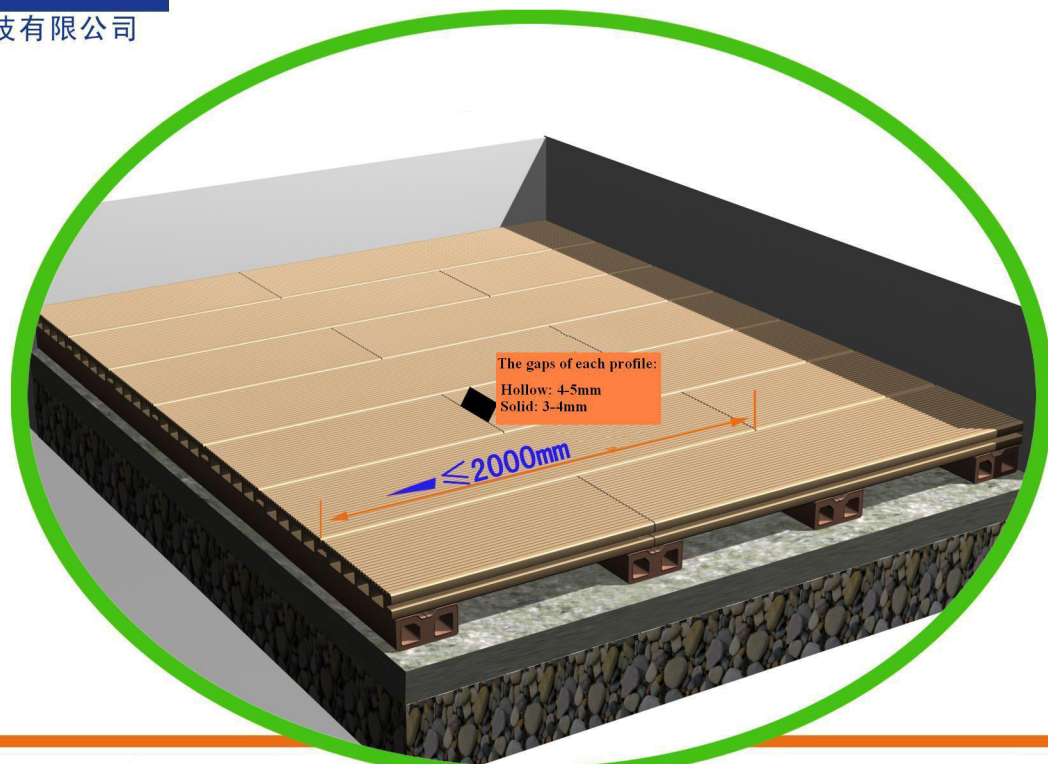


Y50-85

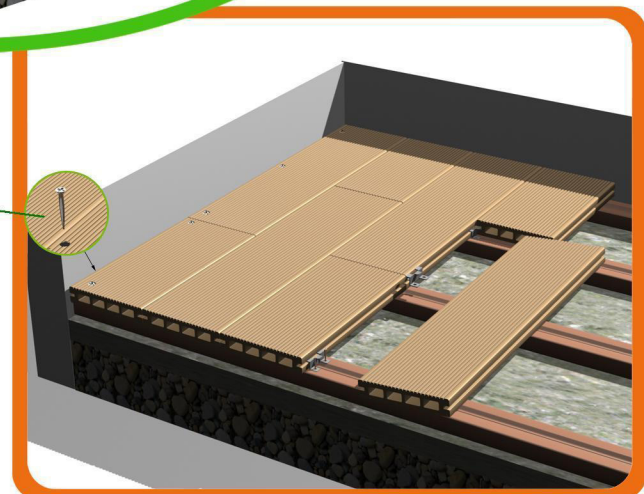
Joist/Keel: K30-60



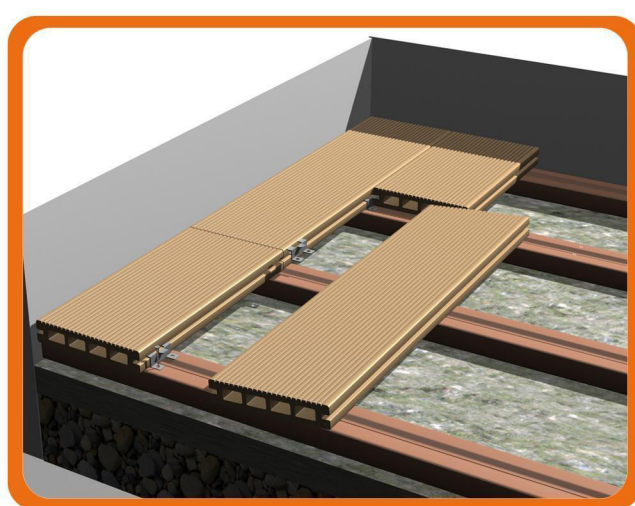
**Notice:**  
 Before fix screws on the any of WPC profiles, it should be pre-dirll smaller hole than screw, because WPC density is higher than wood, or it will crack.



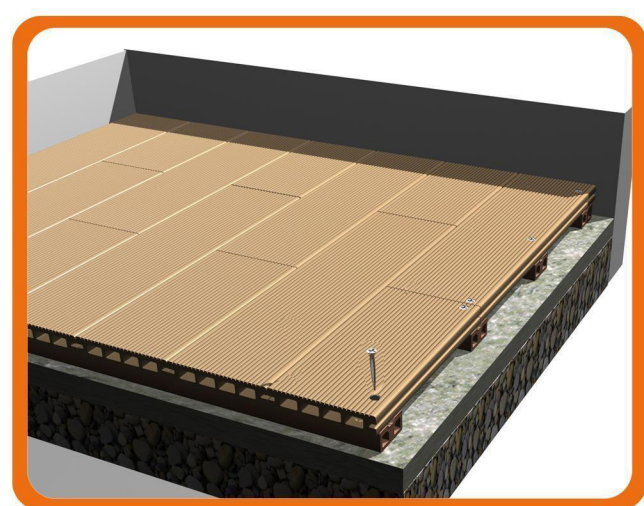
I、The installation of the first deckings/floors profiles



III、Insert decking/floor profiles into buckles/clips

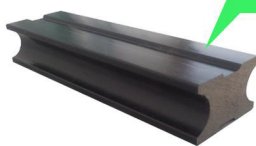


II、Install decking/floor profiles by buckles/clips



IV、The installation of the last decking/floor profiles

Keel/joist: Y25-40



I 、 The decking conjunction place needs two pcs keels/joists



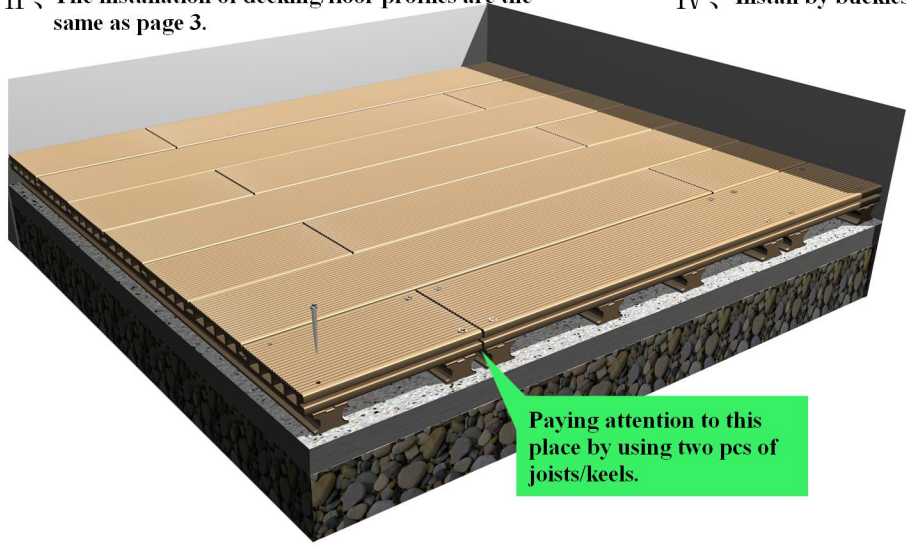
III 、 The end of each decking profile needs to be put on each keel/joist.



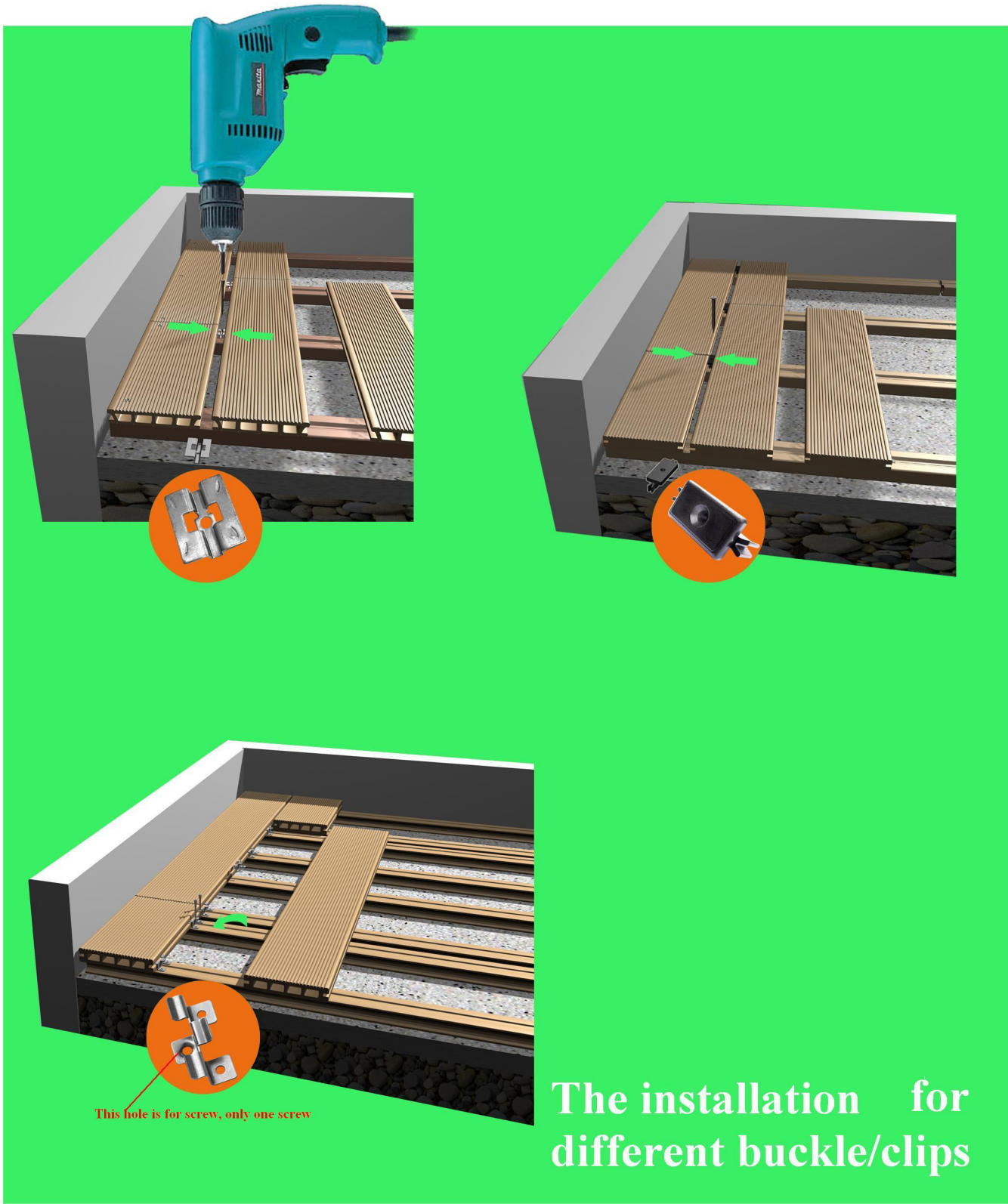
II 、 The installation of decking/floor profiles are the same as page 3.



IV 、 Install by buckles/clips one by one

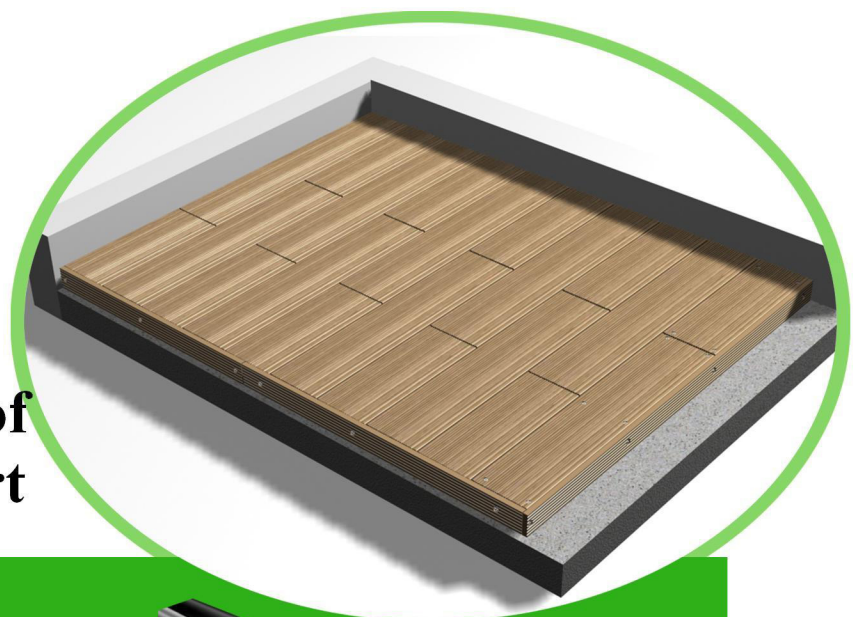


Paying attention to this place by using two pcs of joists/keels.



This hole is for screw, only one screw

The installation for different buckle/clips



# The installation of WPC ending/skirt

